

SAT-G90

High-performance industrial inspection infrared camera

SUPER AFTER TRYING

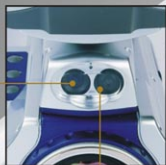


SATIR

G90

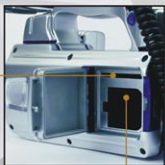


SAT-G90



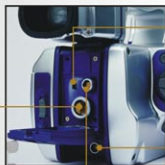
Laser pointer

Visual CCD camera



Battery compartment

PCMCIA card slot

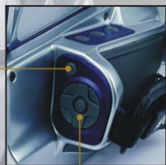


USB2.0 port

Remote control LCD interface

Headset and microphone connector

Video output



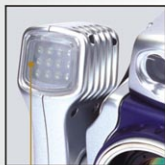
Keypad

Power switch



3.5 inch swivel LCD display can be detached and integrated with remote control

System status display



Light for visual CCD imaging



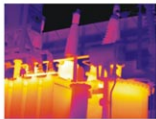
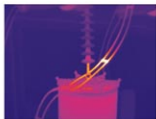
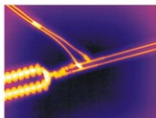
Optional 8 variant lens for special application



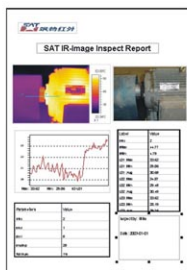
Swiveling LCD display



Swiveling TFT viewfinder



SAT-G90 comes standard with extensive embedded image processing and analyzing software. The infrared image can be imported to a PC using optional SAT report software, which provides additional analysis and reporting capabilities. With the RS232 and USB2.0 port, the camera can be controlled with PC and the image can be transferred into PC at real time speed.



SAT-G90 infrared camera is a combination of aesthetics and technology. With detachable LCD display and remote control, operators can easily find out abnormal spot which is hard to be seen. It ensures versatile application and efficient inspection. All of these functions enable the camera to be the best choice for predictive and preventive maintenance.



SAT-G90 is a lightweight high-performance infrared camera offering unbeatable capabilities not being found in other costly models in the world. The camera is ergonomically designed for comfortable one-handed operation using keypad located below the build-in viewfinder. Completely with detachable and swiveling LCD display, it includes on-board digital voice recording, stores thermal/visual images to PCMCIA card and transfers images from the camera to PC via the video output or through the standard USB interface.

G90 Specification

Architecture

Infrared, CCD and laser pointer

Detector

Type: Amorphous Silicon Microbolometer
Spectral band: 8 - 14 μ m
Pixel resolution: 320X240

Imaging Performance

FOV: 24° X18°
Spatial resolution: 1.3mrad (With Standard Lens)
NETD: 0.08 μ C @ 30 μ C
Frame rate/ Video system: 50Hz (PAL) or 60Hz (NTSC)

Temperature Measurement

Range: -20 μ C-600 μ C (Standard) -40 μ C-2000 μ C (Extended)
Accuracy (% of reading) : \pm 2 μ C or \pm 2%

Image Presentation

Video output: Pal / NTSC (optional)
View finder: Build-in view finder and external 3.5" LCD
Others: Viewing and operating with detachable remote control
Light for CCD: Taking high resolution CCD pictures in dark

Image Storage

Image storage: 600 infrared images or CCD images(128MB)
File format: Standard format with temperature data
Voice annotation: 40 seconds voice annotation storage with each image
Comments: Add comments to the selected images.
Recall: Recalling and analyzing saved images

Physical Characteristics

Power supply: Lithium battery with working time more than 2.5 hours
Weight: \leq 1.7 Kg (including battery)

Environmental Characteristics

Encapsulation: Ip54
Vibration: 2.5g
Shock: 25g
Operating temperature: -15 μ C-50 μ C
Humidity: \leq 95% non-condensing
Storage temperature: -40 μ C-70 μ C

Analysis Function

USB interface: USB 2.0, transfer the image and data at real time
Multi spot: Simultaneous ten spots measurement
Profile analysis: Visualize temperature distribution cross screen
Area analysis: Display max/min/avg temperature in five pre-defined boxes
Temp. alarm: Alert at presettable threshold temperature
Temp. capture: Tracking the highest or lowest temperature spot
Isothermal: Display temperature gap in highlighted colour
Temp. Deviation: Calculate and display temperature deviation
Picture in picture: Display the infrared imaging and CCD image on the same screen
Pseudo-colour: Six colour palettes can be selected
Image zooming: Continuous digital zoom (up to 8 times)
Quad-dispaly: Activate each image for normal operation
Auto-focusing: Adjust focus automatically & intelligently, user can get high-resolution images.
Remote-control LCD: user can control the camera by operating the detachable remote-control hand-held LCD.

Reporting Software

With Windows™ based multi-language reporting software, a word compatible report can be generated automatically through templates.

GUANGZHOU SAT INFRARED TECHNOLOGY CO.,LTD.

No. 10 Dongjiang Avenue, Guangzhou Economic & Technological Development District, Guangzhou, China.

Zip:510736
Tel:8620-82228925(MKT) 8620-82227955(Service)
Fax:8620-82227847
http://www.sat.com.cn
E-mail: sat@sat.com.cn