

## IRI4015 – Thermal Imager for Buildings



**How much is your building *really* costing you?**

# Irisys IRI4015 – Thermal Imager for Buildings



## Typical users of a Building Thermal Imager

- Building inspectors
- Facility managers
- Building surveyors
- Energy loss auditors
- Commercial refrigeration engineers
- Building and services maintenance teams

## Why use Thermal Imagers on Buildings?

When looking at ways to reduce energy consumption, it is essential to assess and understand the current state of the fabric of a building. A thermal imager is an ideal tool to check both the fabric and the services of a building.

Typical uses include:

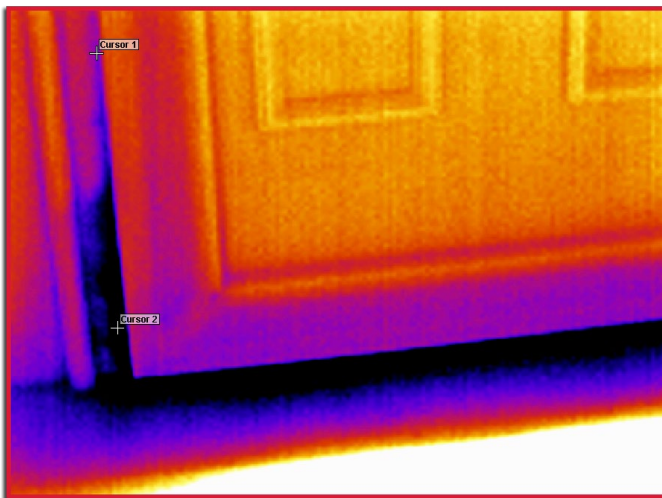
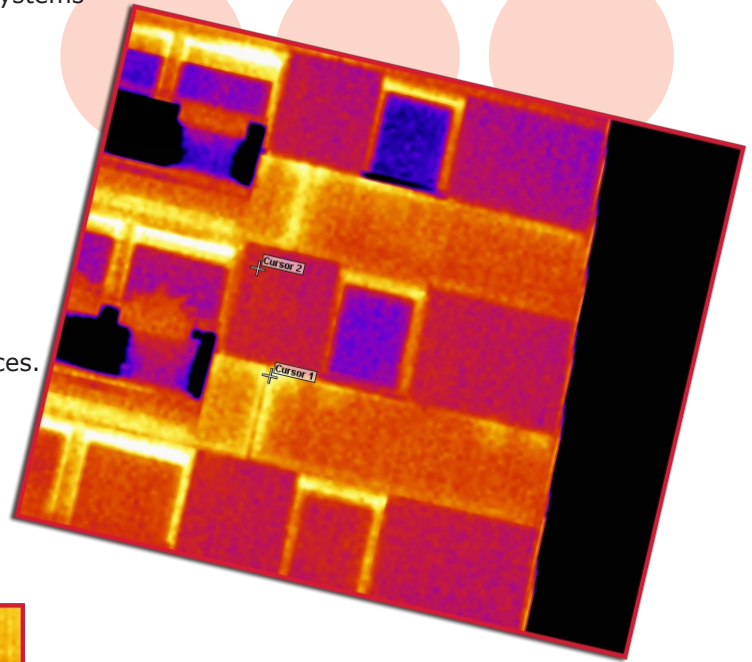
- Checking for missing and damaged insulation
- Identifying any air leaks and leakage paths through ill fitting windows, doors, roofing and pipe work such as radiators and air ducts
- Looking for and identifying hidden thermal bridges between inner and outer walls
- Checking and identifying areas of damp and/or mould that can cause structural damage and potential health problems
- Identifying possible areas of vermin infestation in thatched roofs or under floors.
- Check the electrical systems, cable and connections, motors and pumps
- Check the HVAC and R systems.
- Finding faults in underfloor and district heating systems

## The Irisys IRI4015 – A Class Apart

The Irisys IRI4015 is a robust and very easy to use building thermal imager with one of the highest specifications for its class:

- Thermal sensitivity  $\leq 0.05^{\circ}\text{C}$
- Screen resolution of 160x120 pixels
- Dual temperature analysis and auto-locking features normally seen in much higher cost devices.
- A rechargeable battery life of up to 6 hours of continual use.

This makes the **IRI4015** the most well equipped entry level device on the market.



**“By highlighting and repairing areas of energy loss in your building you are not only helping to save on your own energy consumption but also helping to reduce greenhouse gases”**

### Simple and easy to use

The front of the **IRI4015** features a manually adjustable IR lens which is simple to focus and an integrated laser pointer for pinpointing potential problem areas



The SD card provided with the **IRI4015** is capable of storing over 1,000 quality thermal images at full digital resolution. It neatly slots into the side of the device as shown here. Also shown are the USB port and AC mains connector.

**The large high resolution 3½" display** with a resolution of 160x120 pixels makes images and information easy to see and read.

Battery charge indicator



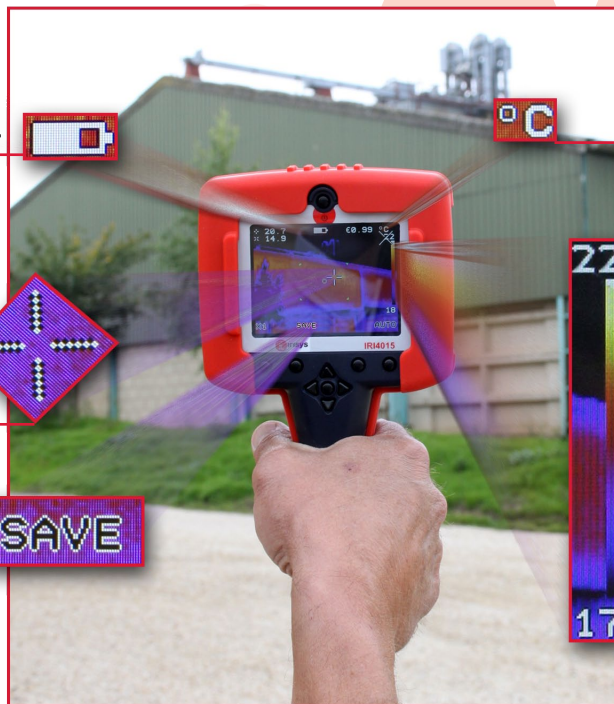
Auto-seeking and locking onto the hottest and coldest points on the image



Image capture, time and date.



Multiple temperature measurement points across the screen with the readout in °C, °F or K.



Display of real time image and temperature measurement

Laser trigger switch



2 x digital zoom



Image browser with full image adjustment



Display palettes: rainbow, ironbow, high contrast and greyscale.

PALETTE RAINBOW



# What makes the **Irisys** IRI4015 an ideal choice of Building Thermal Imager?



- Cost effective – the IRI4015 is the most feature rich thermal imager in its class
- Ergonomics – the IRI4015 is extremely easy to use and carry on site. The 6 hour lithium ion battery allows full use through a normal working shift
- Thermal sensitivity – the IRI4015 has the best in its price range
- With a screen resolution of 160x120 pixels the IRI4015 has 33% more pixels than its nearest rival
- On device auto-locking of both the hottest and coldest points (showing an instant temperature differential) is unique for a device in this class
- The IRI4015 is extremely robust conforming to vibration, shock and drop testing
- A full software suite is included for thermal image analysis and report writing

## Analysis & report writing software package



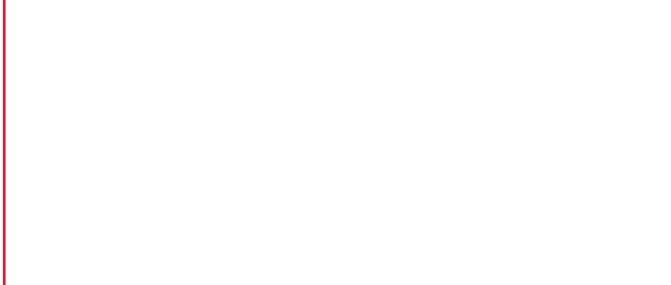
The **Irisys** IRI4015 comes with a complete set of analysis and report writing software. This allows the vital data contained in the thermal images to be extracted e.g. identification of cold or hot spots. This information can then be compiled into a comprehensive report detailing any observations made along with the associated comments and potential recommendations or suggestions for the end user, e.g. insulation levels may need to be checked.

## The **Irisys** IRI4015 Building Thermal Imager Pack Includes:

- IR Camera
- Battery
- AC Adaptor
- Car Charger
- USB cable
- CD with user manual and software (PC analysis and report writer)
- Carrying case
- Wrist strap
- Rubber protector
- SD card and SD card reader
- Light Shade



### Authorised Irisys Distributor:



## InfraRed Integrated Systems Limited

Park Circle, Tithe Barn Way, Swan Valley, Northampton, NN4 9BG. UK

Tel: **+44 (0) 1604 594 200**  
Fax: **+44 (0) 1604 594 210**  
Email: **sales@irisys.co.uk**  
Web site: **www.irisys.co.uk**

September 2010  
IPU 40319  
Issue 1



'SPECIFICATIONS ARE SUBJECT TO CHANGE WITHOUT NOTICE'

©Copyright 2010, Infrared Integrated Systems Ltd. All rights reserved including the right of reproduction in whole or in any form.