

REG FARRELL ENGINEERING LIMITED

Distributors of Electro-Technical Engineering & Safety Equipment

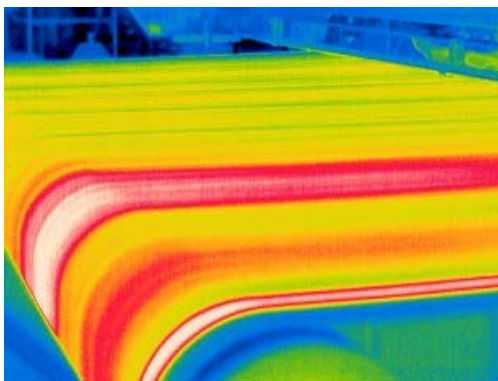
Solving Problems ... Providing Solutions

SAT – HY6900 Professional Portable Infrared Camera



Precision Direct Temperature Measurement

Ten movable cursors provide accurate non-contact temperature measurement from -40°C to 2000°C . Horizontal and Vertical line profiling, five areas analysis, highest or lowest temperature point tracking, higher or lower temperature alarms, and isothermal analysis adds powerful utilities to SAT-HY6900 Professional Portable UFPA Infrared Camera for industrial inspection.

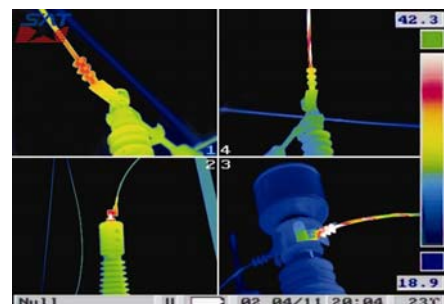


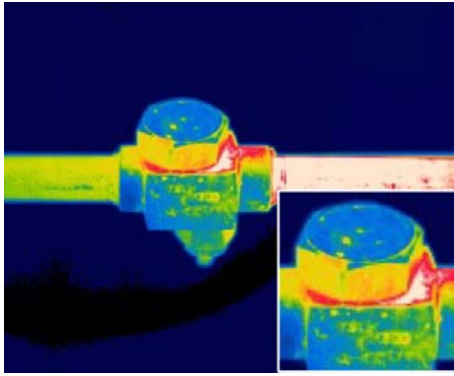
Uncooled Focal Plane Array Technology

State-of-the-art long wavelength uncooled microbolometer technology requires no cryogenic cooling for added reliability without sacrificing performance. SAT-HY6900 can be used to view temperature differences as small as 0.08°C on sharp, immune to solar reflections, measure any one of the 320×240 picture elements in each image. This makes the SAT-HY6900 ideal for most predictive maintenance applications.

On-Board Four Image Trending

Exclusive real-time in-field trending makes image analysis easy to do, yet provide importance and instant results. One push button action captures four images in sequence for precision radiometric temperature analysis on all images.





User Adjustable Incremental Zoom

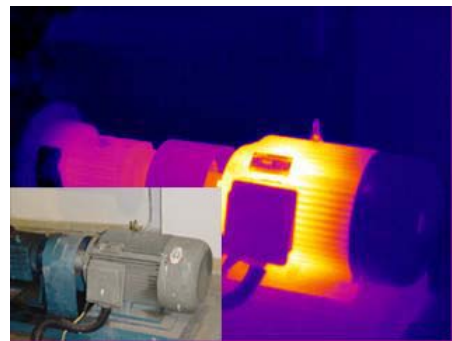
Digital zoom capability is available in 80 individual settings ranging from 1:1 to 8:1, in 1/10 increments. All incremental zoom settings are spatially filtered to keep the image looking crisp and clear. The SAT-HY6900 IR camera incorporates the industry's most powerful digital zoom feature available.

On-Board Digital Image and Voice Recording

Improve the efficiency of your infrared surveys with fast image capture and voice recording. The SAT-HY6900 is capable of storing 800 IR or CCD images with up to 30 seconds of embedded audio per image on convenient removable 128M flash-memory cards

Image Overlap

There is no need to manually adjust a single point movable temperature cursor with the SAT-HY6900 as it can be set to auto-mode and the camera tracks the highest or lowest temperature in the scene automatically.



Point & Shoot

Users can clearly identify potential problem areas while viewing the IR image through the built-in high-resolution TFT viewfinder or through the side-swivel 3.5" TFT LCD. Single button freeze-frame and capture enables users to preview image prior to storage to prevent repeating inspections and capturing additional images.

The Detachable Swivel LCD for Remote Control

An innovative swivel and detachable remote control LCD display is equipped on the left side of HY6900. The shared LCD screen makes the camera more flexible and cost-effective. With this display and remote control, users can easily find out abnormal spot, which is hard to be seen with build-in LCD viewfinder or swivel LCD display.



Temperature Tracking

There is no need to manually adjust a single point movable temperature cursor with the SAT-HY6900 as it can be set to auto-mode and the camera tracks the highest or lowest temperature in the scene automatically.

Laser Pointer

There is a laser pointer mounted on the front of the camera body in SAT-HY6900. Users can easily find the defect spot of the equipment via IR image in conjunction with this laser pointer.

Rugged Construction

Housed in an aluminium sealed case, the SAT-HY6900 IR camera is capable of withstanding the harshest of environments and meets IP54 standards.

User Interface

The ergonomic design of the SAT-HY6900 fits comfortably in one hand and requires no external power sources or cables for operation. The SAT-HY6900 uses standard off-the-shelf, long-life, memory-free Li-ion batteries with an intelligent charging system to provide hours of use with each battery.

Superior Image Analysis and Report Generation

The SAT-HY6900, in conjunction with SAT-Report Analysis software, makes documenting results easier than ever before. Operating in fast-report mode allows the user, with a single mouse click, to transfer field data and images seamlessly into professional, comprehensive reports.

RS232 Remote Control

Connected with computer through RS232 interface, the SAT-HY6900 can be control with all the on-board functions remotely.

Optional Lenses

Optional lenses available to meet diverse applications, regardless of target size, distance or temperature variations. The SAT-HY6900 can add several kinds of lenses, which are suitable for some special use.

Description	Characteristics	Performance
Detector	Type	Microbolometer UFPFA
	Spectral range	8-14 μ m
	Resolution	320 x 240
	Fill Factor	> 80%
Imaging Performance	NETD	0.08°C at 30°C
	Lens / focusing	24° x 18°, 50mm; motor focusing
	Spectral resolution	1.3 mrad
	Min focusing distance	0.3m
	Frame rate	50Hz PAL/ 60Hz NTSC, non-interlaced
Image presentation	Video output	Pal / NTSC (optional)
	Image display	256 level, Black/White and pseudocolor
Features	Image freeze	Run or freeze
	Image storage	800 pcs /128M Flash card (IR/CCD Image and sound)
Measurement	Temperature range	-20-600°C, Standard; -40-2000°C, extendable
	Accuracy	± 2 °C or $\pm 2\%$
Analysis Functions	Multi Spot (10)	Ten points analyzed in the meantime
	Temperature capture	Tracking the highest or lowest temperature spot automatically in the whole image
	Line analysis	Analyze temperature distribution on the line
	Five Area analysis	Display max/min/avg temperature in five defined boxes
	Temperature difference	Calculate the difference between measured temp value and the preset temp value automatically
	Image Overlap	Display IR image and CCD picture simultaneously
	Isothermal	Display the preset temperature area in sharp color

	Temperature Alarm	Preset the alarm temperature value and camera will show alarm when over or below it
	Voice annotation	40 seconds voice annotation can be stored within each image
	Adjustment	Level, gain, sensitivity and color span can be adjusted automatically or manually
	Four-image display	Display four images in the meantime
	Image zooming	Electronic zoom in and zoom out (up to 8x)
Software	Analysis software	Report generation software
Laser Pointer	Classification	Class 2
	Type	Semiconductor device
Environmental specification	Operational temperature	-20 °C ~ 50 °C
	Storage temperature	-40 °C ~ 70 °C
	Encapsulation	IP54 IEC 529 housing
	Humidity	<95%, non-condensing
	Vibration	2G, IEC68-2-29
	Shock	25G, IEC68-2-6
Physical Characteristics	Weight	<1.7 Kg (including battery)
	Size (L x W x H)	190mm x 125mm x 140mm (Standard Model)
	Battery working time	> 2 h